



Pressure Switches Model: D500/11D

The Sensor of Switch is Diaphragm type, it can be suitable neutral gas and fluid medium, The Set Point of the Switch is adjustable, the adjustable range is from 0.1 to 25kpa, working pressure range is from 0 to 50kpa.



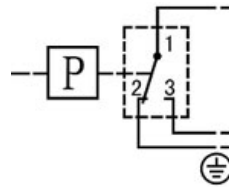
上海远仪控制器厂有限公司

Tel: (021)56325599 56983311 69927271

Fax:69927273 http://www.shyuanyi.com

□ Main Technical Performance

Working viscosity: $<1 \times 10^{-3} \text{m}^2/\text{s}$
Switching element: Micro-switches
Protection Class: IP65
Ambient temperature: $-5 \sim 40^\circ\text{C}$
Fluid temperature: $0 \sim 80^\circ\text{C}$
Electrical rating: AC 220V 6A
Repeatability: $\leq 1.5\%$
Vibrations: Max: 40m/s^2 (As possible as not to be installed at oscillatory location)



Switching Function:
Micro-switch SPDT

Terminals 1-3:
Contacts close on rising pressure

Terminals 1-2:
Contacts open on rising pressure

□ Features

Suitable for very low pressure control.
Specially suited for gas.

□ Characteristic date

● Switching pressure difference no adjustable

Adjustable Range MPa	Switching pressure difference		Max. Allowable Pressure ¹⁾ MPa	Number of switching cycles Z(1/min)	Pressure sensor materials		Connection (internal thread)	Weight (kg)	Drawing No.	Cat.No.
	Lower range MPa	Upper range MPa			Housing	Diaphragm				
0.1--2	0.88	0.1	60	10	AI	NBR	G1/4"	0.5	01	0823100 ²⁾
2--25	0.25	0.7	60	10			G1/4"	0.5	01	0823000

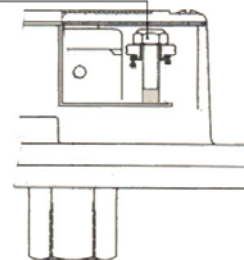
Notes: ¹⁾Even shot pressure peaks must not exceed this value (=max.test pressure)

²⁾Only fit for installing at non-vibration location

□ Setting of switching points

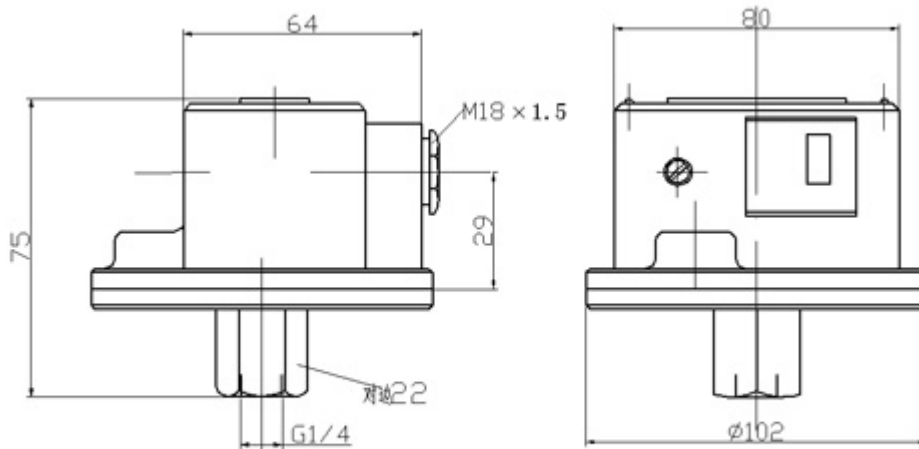
Set upper or the lower switching point by means of self-locking hex nut. The opposite one is then determined by the fixed switching pressure difference. By turning the setscrew clockwise, the switching points are shifted upwards. To set precise switching points a pressure gauge is required. (The pressure switch is a switching and regulating device and not a measuring instrument even if it has a scale to assist in the setting). The switching points may be set even during operation.

Setting of switching point





Dimensional drawing



● **Switch selection and mounting instructions**

The switching points should normally be in about the middle of the adjustable range.

Do not exceed electrical ratings.

Electrical connection by a M18x1.5 cable gland, in accordance with local regulations. For outdoor installation sufficient protection has to be provided for Critical conditions are: Aggressiveness of air, high or low temperatures, drastic changes in temperature, solar radiation, penetration of water.